

# SMART PARTS

## Washable, Reusable Cabin Air Filters

### INSTALLATION INSTRUCTIONS PART NO. SP11708

The cabin air filter is located behind the glove compartment.

Installation time: 45 min

- Open glove compartment
- Remove two locking tabs from either side
- Remove four screws from left, center, and right of compartment and close compartment (FIG 1, 2)
- Remove access panel from right side of glove compartment
- Remove two button screws under access panel (FIG 3)
- Remove access panel in center of console under radio and remove screw on right side of panel (FIG 4)
- Remove access panel under glove box
- Remove two screws on underside of glove box and one screw on metal bar (FIG 5)
- Carefully disconnect light wire on left side (FIG 6) and remove glove box
- Remove remaining two screws on either side of metal bar and remove bar (FIG 8, 9), but do NOT remove ground screw
- Locate and pull up on filter access door to release and remove (FIG 10)
- Pull out first filter in housing then slide second out (FIG 11, 12)
- Install new Smart Parts Washable Reusable Cabin Air Filter (FIG 13) (squeeze to fit if needed)
- Reverse above steps to reassemble



FIG 1



FIG 2



FIG 3



FIG 4

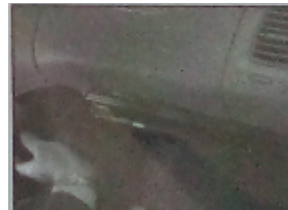


FIG 5

*This is only a guide. See Owner's Manual and/or your mechanic for exact instructions for your particular model.*



FIG 6



FIG 7



FIG 8



FIG 9

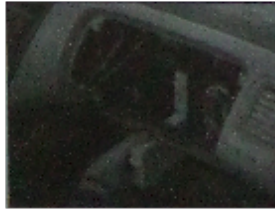


FIG 10

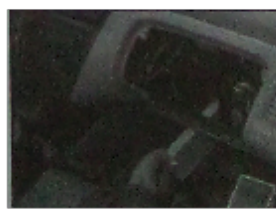


FIG 11

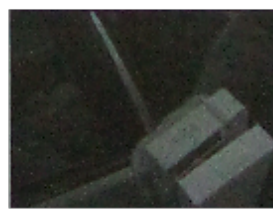


FIG 12



FIG 13

*This is only a guide. See Owner's Manual and/or your mechanic for exact instructions for your particular model.*